

Model DC-011
C.I Body

- The max width of door is 800-1150mm, suitable for the door weight of 50-60kg.
- The adjustable section of closing speed is 180° - 20°. Adjustable section of locking is 20° - 0°.
- Graded cast iron body with three layers brightness painting to protect from oxygenation.
- Double speed door closer with single hydraulic pressure valve to adjust second speed for latching.
- First speed is inbuilt and fixed. Very easy to operate.
- The high carbon steel axis and rack improves smooth running and protects from oil leakage.
- Hole distance: 150 x 25mm. Other approx dimensions are 175x44x65mm.
- Universal operation.



Model DC-011
Hex Body

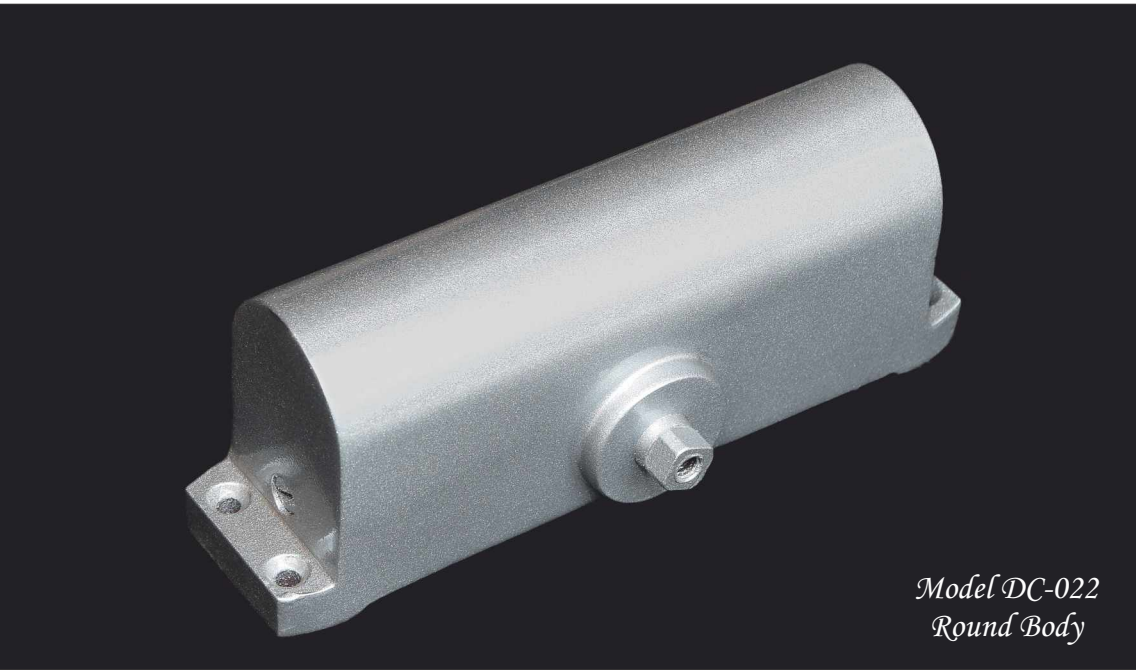
- The max width of door is 800-1150mm, suitable for the door weight of 45-65 kg.
- The adjustable section of closing speed is 180°-20° the adjustable section of locking is 20°-0°.
- Graded alloy aluminum body and the three layers of brightness Painting will protect it from Oxygenation
- One hydraulic pressure valves control two sections of door closing separately, the speed of locking have been controlled by the whole section of hydraulic pressure.
- The high-carbon steel axis and rack improves smooth running and protects from oil leakage.
- Universal operation.

Dimensions can be changed at any moment.



Model DC-011
Square Body

- The max width of door is 800-1150mm, suitable for the door weight of 45-65 kg.
- The adjustable section of closing speed is 180°-20° the adjustable section of locking is 20°-0°.
- Graded alloy aluminum body and the three layers of brightness Painting will protect it from Oxygenation
- One hydraulic pressure valves control two sections of door closing separately, the speed of locking have been controlled by the whole section of hydraulic pressure.
- The high-carbon steel axis and rack improves smooth running and protects from oil leakage.
- Universal operation.



Model DC-022
Round Body

- The max width of door is 800-1200mm, suitable for the door weight of 50-65kg.
- The adjustable section of closing speed is 180° - 20°. The adjustable section of locking is 20° - 0°.
- Graded cast iron body with three layers brightness painting to protect from oxygenation.
- Double speed door closer with single hydraulic pressure valve to adjust second speed for latching.
- First speed is inbuilt and fixed. Very easy to operate.
- The high carbon steel axis and rack improves smooth running and protects from oil leakage.
- Hole distance: 160 x 20mm. Other approx dimensions are 173x44x65mm.
- Universal operation.

Dimensions can be changed at any moment.



Model DC-055

- Two Speed Adjusting Door Closer. Latest model.
- The max width of door is 900-1200, suitable for the door weight of 65-90 kg.
- The adjustable section of closing speed is 180°-20°, Adjustable section of locking is 20°-0°.
- Graded alloy aluminum body with three layers brightness painting to protect from oxygenation.
- One hydraulic pressure valves control two section of door closing speeds.
- The high-carbon steel axis and rack improves smooth running and protects from oil leakage.
- Hole distance: 168 x 19mm.
- Universal operation.



Model DC-066

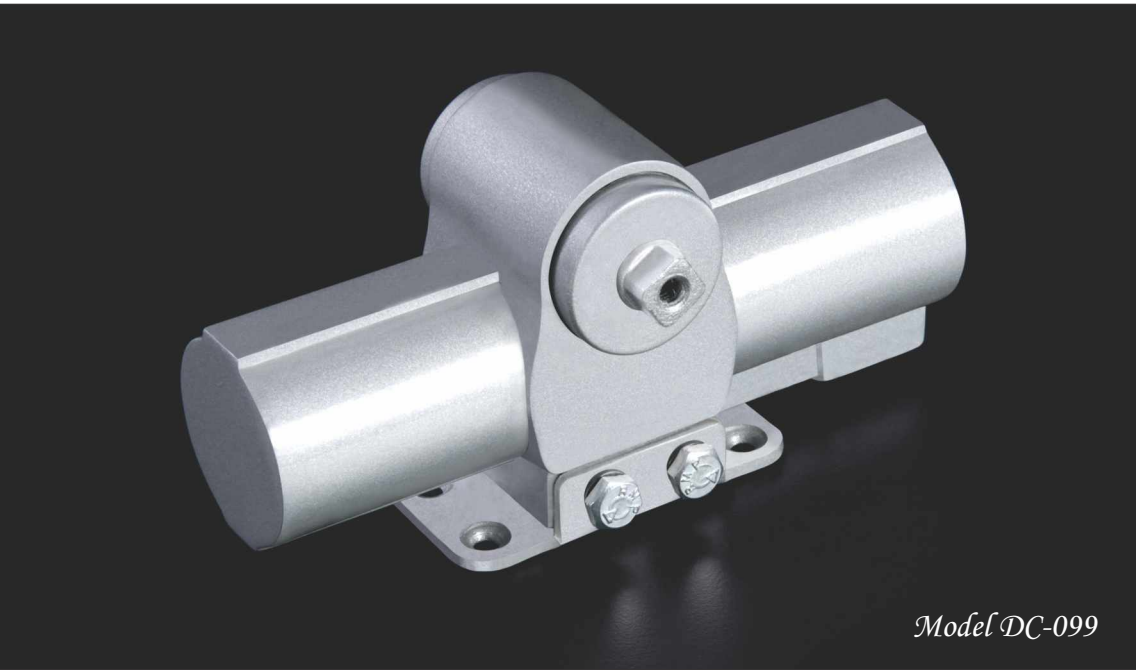
- The max width of door is 900-1150mm, suitable for the door weight of 45-65kg.
- The adjustable section of closing speed is 180°-20, the adjustable section of locking is 20°-0°
- Graded alloy aluminum body and the three layers of brightness painting will protect it from oxygenation.
- Two hydraulic pressure valves control two sections of door closing separately, the speed of locking have been controlled by the whole section of hydraulic pressure.
- The high-carbon steel axis and rack improves smooth running and protects from oil leakage.
- Universal operation.

Dimensions can be changed at any moment.



Model DC-077
Hexa Body

- The max width of door is 600-900mm, suitable for the door weight of 40-50kg.
- The adjustable section of closing speed is 180°-20, the adjustable section of locking is 20°-0°.
- Graded alloy aluminum body and the three layers of brightness painting will protect it from Oxygenation.
- The speed of locking have been controlled by the whole section of hydraulic pressure.
- The high-carbon steel axis and rack improves smooth running and protects from oil leakage.
- Hole distance: 150 x 20mm.
- Universal operation.



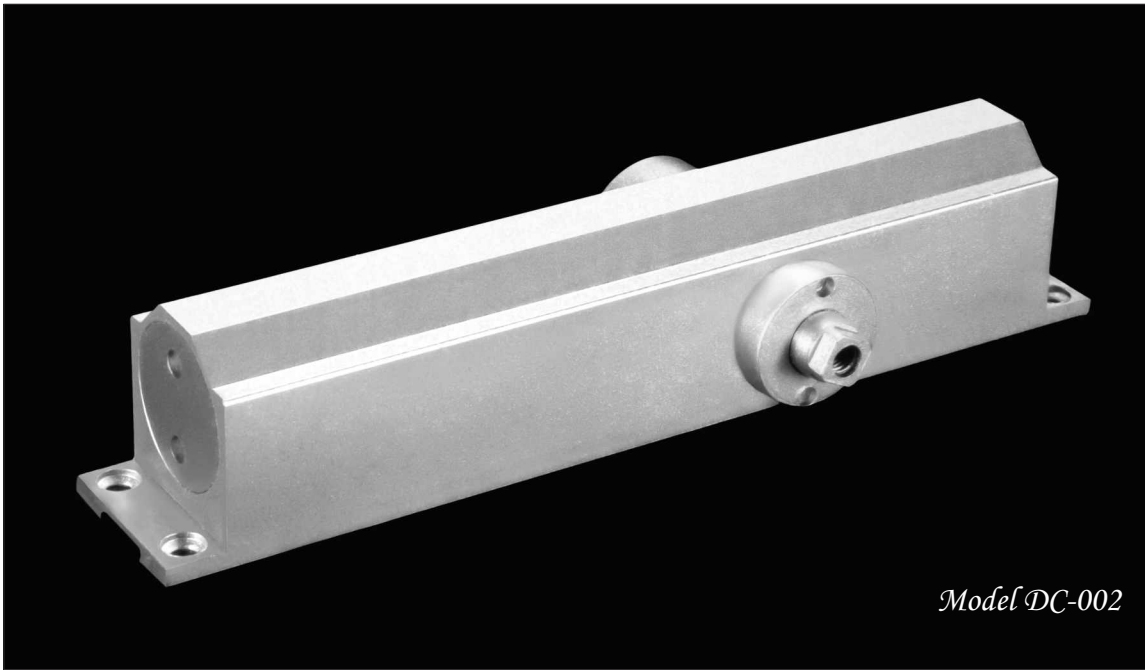
Model DC-099

- INDIA'S only invention patent door closer.
- 180° opening. Speed control valve open to view. Universal operation.
- The max width of door is 900-1200mm, suitable for door weight of 60-65 kg.
- The adjustable section of closing speed is 180° - 20°. Adjustable section of locking is 20° - 0°.
- Graded cast iron body with three layers brightness painting to protect from oxygenation.
- Double speed door closer with single hydraulic pressure valve to adjust second speed for latching.
- First speed is inbuilt and fixed. Very easy to operate.
- The high carbon steel axis and rack improves smooth running and protects from oil leakage.
- Hole distance: 63 x 23mm. Other approx dimensions are 160x44x65mm.
- Dimensions can be changed at any moment.



Model DC-001
Round

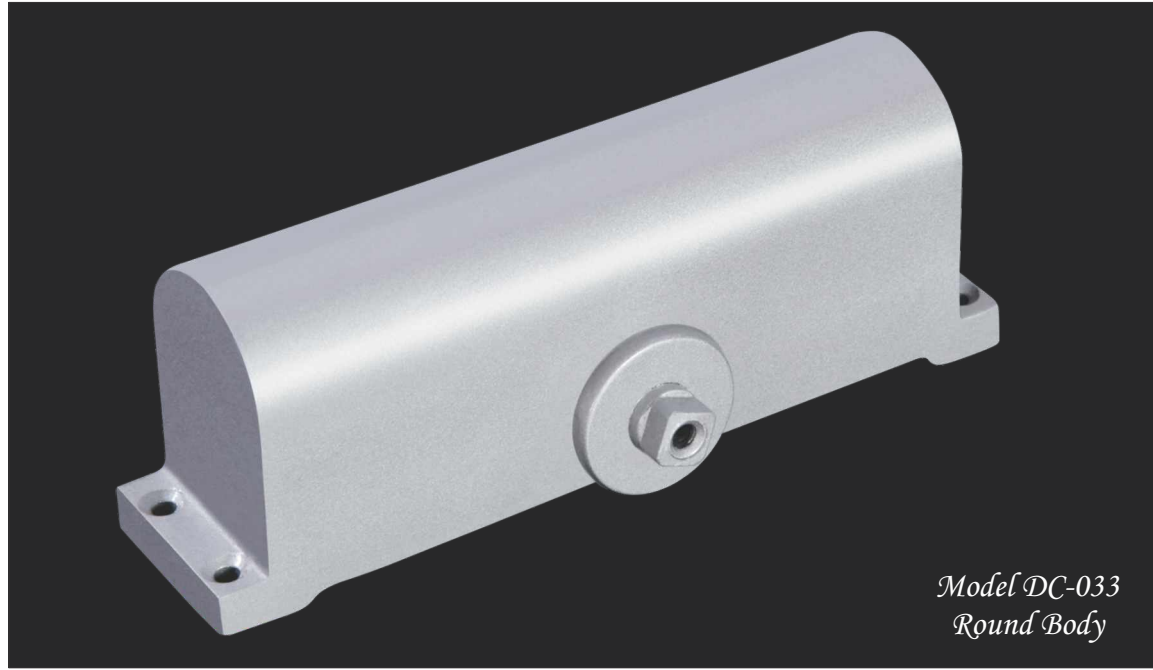
- The max width of door is 850-1150mm, suitable for the door weight of 45-55kg.
- The adjustable section of closing speed is 180°-20°. Adjustable section of locking is 20°-0°.
- Graded alloy aluminum body and the three layers of brightness Painting will protect it from oxygenation.
- Single hydraulic pressure valves control two sections of door closing separately, The speed of locking have been controlled by the whole section of hydraulic pressure.
- The high-carbon steel axis and rack improves smooth running and protects from oil leakage.
- Hole distance: 178 x 25mm. Other approx dimensions are 187x36x40mm.
- Universal operation.



Model DC-002

- The max width of door is 850-1200mm, suitable for the door weight of 50-65kg.
- The adjustable section of closing speed is 180° - 20°. The adjustable section of locking is 20° -0°.
- Graded alloy aluminum body and the three layers of brightness Painting will protect it from oxygenation.
- Double speed door closer with single hydraulic pressure valve to adjust second speed for latching.
- First speed is inbuilt and fixed. Very easy to operate.
- The high carbon steel axis and rack improves smooth running and protects from oil leakage.
- Hole distance: 190 x 26mm. Other approx dimensions are 200x36x40mm.
- Universal operation.

Dimensions can be changed at any moment.



Model DC-033
Round Body

- The max width of door is 800-1200mm, suitable for the door weight of 50-70kg.
- The adjustable section of closing speed is 180° - 20°. The adjustable section of locking is 20° - 0°.
- Graded cast iron body with three layers brightness painting to protect from oxygenation.
- Double speed door closer with single hydraulic pressure valve to adjust second speed for latching.
- First speed is inbuilt and fixed. Very easy to operate.
- The high carbon steel axis and rack improves smooth running and protects from oil leakage.
- Hole distance: 172 x 27mm. Other approx dimensions are 185x44x65mm.
- Universal operation.



Arms



Brown



Golden

Colours available are :



Golden



Brown



Silver